

# Memorial Presbyterian Church

SERVICE FOR THE LORD'S DAY

November 27, 2016

10:55 a.m.



# Memorial Presbyterian Church

## SERVICE FOR THE LORD'S DAY

1st Sunday of Advent

November 27, 2016

### GATHERING AROUND THE WORD

*Unexpected God,  
your advent alarms us.  
Wake us from drowsy worship,  
from the sleep that neglects love,  
and the sedative of misdirected frenzy.  
Awaken us now to your coming,  
and bend our angers into your peace. Amen.*

### WELCOME AND ANNOUNCEMENTS

PRELUDE

Wake, Awake

Paul Manz

### BRINGING THE LIGHT

\*CANDLE LIGHTING

Genesis 1:1-5

*The Advent wreath is a visible reminder of the Light that awaits us as we approach the miracle of Christmas. This circle of intertwined branches is a symbol of God's endless love and eternal grace. Each candle represents a pathway out of the darkness toward the light, and gives us time to reflect upon the true meaning of advent. The hope, peace, love and joy that we anticipate along the way are fulfilled by the birth of a child whose life touches the heart of every believer, and whose light will be the light of the world.*

In the beginning when God created the heavens and earth, the earth was a formless void and darkness covered the face of the deep.

**A wind from God swept over the face of the waters. Then God said, "Let there be light"**

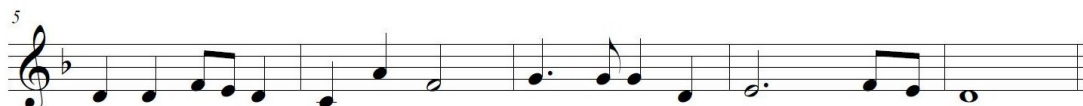
And there was light. And God saw that the light was good.

**God separated the light from the darkness. God called the light Day, and the darkness He called Night.**

And there was evening and there was morning, the first day.



Ad - vent can - dles warm and bright, fill the world with ra - diant light.



Help us find the Prom - ised One; guide us to the child who will come.

\*SONG OF PRAISE "Sleepers, Wake!" A Voice is Calling

349

\*CALL TO CONFESSION

\*ADMITTING OUR BROKENNESS

**Holy God, we confess  
that we do not walk in your light.  
We hurt and destroy one another  
and neglect the poor and hungry.  
We let evil grow among us  
and fail to bear good fruit.  
Forgive us, God of grace.  
Awaken us to your Word,  
so that we may be ready  
to welcome you with joy;  
through Jesus Christ our Lord.**

(Time of silent reflection)

\*DECLARATION OF FORGIVENESS

In the name of Jesus Christ, we are forgiven!

**Thanks be to God.**

\*THE PEACE

Since God has forgiven us in Christ, let us forgive one another.

The peace of our Lord Jesus Christ be with you all.

**And also with you.**

\*SONG OF RESPONSE *Angels We Have Heard on High (refrain)*

113

TIME WITH YOUNG DISCIPLES

MOMENT FOR MISSION-Stewardship

### **PROCLAIMING THE WORD**

PRAYER FOR UNDERSTANDING

SCRIPTURE READING

Isaiah 2:1-5

The Word of the Lord.

**Thanks be to God.**

Page No. 550

RESPONSIVE PSALM READING

Psalms 122

ANTHEM

The Promise of Advent

SCRIPTURE READING

Matthew 24:36-44  
The Word of the Lord.  
**Thanks be to God.**

Page No. 806

MESSAGE Waiting. Tracy L. Evans

\*SONG OF FAITH Watchman, Tell Us of the Night 97

\*AFFIRMATION OF FAITH

**We believe that God has entrusted the church  
with the message of reconciliation  
in and through Jesus Christ.**

**We believe that the church is called  
to be the salt of the earth  
and the light of the world.**

**We believe that the church is called blessed  
because it is a peacemaker.**

**We believe that the church is witness  
both by word and by deed  
to the new heaven and the new earth  
in which righteousness dwells.**

*Adapted from the Confession of Belhar*

SHARING OF JOYS AND CONCERNS

The Lord's Prayer

Hymnal, p. 35

THE OFFERING

OFFERTORY

Intermezzo

S. D. Wolff

\*DOXOLOGY *All Creation Join in Praising* 143

All creation, join in praising God the Father, Spirit, Son,  
evermore your voices raising  
to the eternal Three in One:  
come and worship, come and worship,  
worship Christ, the newborn king!

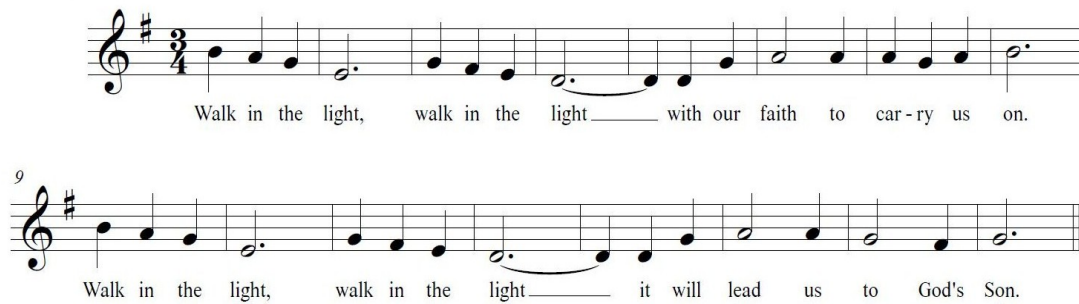
DEDICATION PRAYER

### **FOLLOWING THE WORD INTO THE WORLD**

\*SENDING SONG Lift Up Your Heads, Ye Mighty Gates 93

\*TAKING LIGHT INTO THE WORLD

\*BLESSING AND CHARGE  
CHORAL BENEDICTION



Walk in the light, walk in the light with our faith to carry us on.

9  
Walk in the light, walk in the light it will lead us to God's Son.

\*POSTLUDE

Lift Up Your Heads

Franklin Ritter

\*Please rise in body or spirit.

We invite anyone who wishes to consider membership in this church to contact the pastor or a member of the session. You may also indicate interest in membership by checking the appropriate column in the ritual of friendship booklet. Membership in this church is a step made by profession of faith, reaffirmation of faith or transfer of church letter.

**Lectionary Readings** for December 4: Isaiah 11:1-10; Psalms 72:1-7, 18-19; Romans 15:4-13; Matthew 3:1-12.

The **Urban Mission** item of the month for November is toilet paper. Please place your donations in the box by the church information table.

**Hearing-assistance** devices and **large print hymnals** are available from the ushers.

**Ushers** for today's service are Larry and Lisa Upton.

Here's your last chance to sign up to ring the **2016 Salvation Army Red Bucket bell**. Memorial volunteers are scheduled to ring the bells on Tuesday, Nov. 29, 2016, at the Dillard's (Sooner Mall) east entrance location. We still need to fill the 4 to 5 p.m. time slot. See or call Paul Phelps (405-310-3198) to volunteer for this time slot. Also, there are some other time slots that only have one ringer, so join your neighbor and ring with them. Again, check with Paul for the schedule. He will call and/or email the final list to all the volunteers. Thanks!

Please join us for a **Christmas Potluck and pageant December 11th**.

**SUNDAY**

**November 27**

9:30 a.m. – Sunday School

10:30 a.m. – Fellowship and Refreshments

10:55 a.m. – Worship Service

12:00 p.m. – Deacons Meeting

5:30 p.m. – Officer Training

**WEDNESDAY**

**November 30**

3:15 p.m. – Kids' Club

4:00 p.m. – Children's Choir

6:30 p.m. – Chancel Choir

**SUNDAY**

**December 4**

9:30 a.m. – Sunday School

10:30 a.m. – Fellowship and Refreshments

10:55 a.m. – Worship Service

5:30 p.m. – Officer Training